

B&W TRANSMISSION DENSITOMETER

T
5
0
0



- Accuracy & Repeatability
- Compact Lightweight Design
- Large LCD Display
- Easy to Use Control Panel
- Extended Measuring Arm

- Light Table for Accurate Positioning
- Measurements Include: Density, Positive or Negative Dot Area

IHARA

T500 B&W TRANSMISSION DENSITOMETER

PROVEN PERFORMANCE & DEPENDABILITY

Ihara's advanced microtechnology ensures reliable results. The simple push-button operation makes density readings easy.

ACCURATE DOT AREA MEASUREMENTS

Make positive or negative film dot area readings.

BROAD DENSITY RANGE

Accurate film density measurements value up to 6.00D.

COMPACT LIGHTWEIGHT DESIGN

Our cordless, portable design makes our densitometer easy to operate at any location.

INSTANT MINI-LIGHT TABLE

The T500 lights up automatically when the measurement arm is lowered or if any function keys are selected. Highlight target area quickly using the mini-light table.

QUICK CHARGES

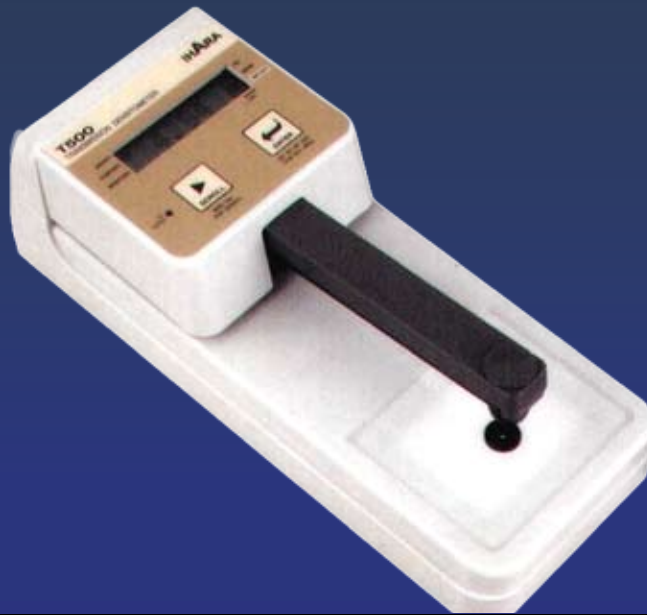
Charge battery in 1 to 1.5 hours. Orange/green LED clearly displays charge status.

EXTENDED USAGE

Each charge provides hundreds of readings. The T500 shuts off automatically to extend battery life.

FLEXIBLE PRINTER & PC INTERFACE

RS-232 serial port links to printers for hard copy and to computers for data analysis and storage.



IHARA T500 B&W TRANSMISSION DENSITOMETER SPECIFICATIONS

- **DIMENSIONS**
Console: 9.9" (L) x 4.1" (W) x 3.4" (H)
(251mm x 103mm x 87mm)
Light table: 3.1" x 2.8" (80mm x 70mm)
Measuring Arm Length: 7.3" (185mm)
- **WEIGHT**
Approximately 1,200g (including battery)
- **POWER SOURCE**
AC adapter 9V-500mA
Built-in Rechargeable Battery (4.8V-800mAh)
- **OPTICAL DESIGN**
ANSI PH2.19 (Specular-Diffuse)
- **RESPONSE**
Visual
- **LIGHT SOURCE**
Halogen Lens Lamp
- **DETECTOR**
Filter, Built-in Photo Diode
- **APERTURE**
3mm, 2mm, 1mm
- **MEASURING RANGE**
Density: 0.00D - 6.00D
Dot Percentage: 0% to 100%
- **MEASURING FUNCTIONS**
Density
Positive Dot Area %
Negative Dot Area %
- **REPEATABILITY**
0.01D (at < 4.0D, 3mm aperture)
- **INTER-INSTRUMENT AGREEMENT**
0.02D (at < 4.0D, 3mm aperture)
- **WARM UP TIME**
None
- **FRINGE CORRECTION**
Supported
- **CALIBRATION**
One touch zeroing operation, Slope calibration using calibration film
- **INTERFACE**
RS-232C Serial interface for printer (9,600bps, 8 Data bits, No Parity, 1 Stop bit)
- **DISPLAY**
8 character LCD
- **OPERATIONAL KEY**
Interlocking arm measuring switch, 2 operational panel keys
- **SOUND CONTROL**
Supported
- **AUTO POWER OFF TIMER**
Supported
- **OPERATING TEMPERATURE RANGE**
41-104 F (5-40 C)
- **STANDARD ACCESSORIES**
 - Instruction Manual
 - Aperture 3mm (installed), 2mm, 1mm
 - AC Adapter (as specified)
 - Calibration Film

Specifications and appearance subject to change without notice. Printed in USA

IHARA

Ihara U.S., Inc.
25030 Avenue Tibbitts, Building K
Valencia, California 91355-9877 USA
Tel: 800-457-8059 (U.S. or Canada)
661-257-5772
Fax: 661-257-5880
Ihara Customer Response Center:
800-457-8059 (U.S.)
ihara-us.com

World Headquarters:

Ihara Electronic Industries Co., Ltd.
2077 Kamitaraga-Cho
Kasugai City, Aichi 486 Japan
Tel: 0568-81-6824
Fax: 0568-81-6040
ihara-group.com

Sales Office:

0568-76-7878 (Japan)
805-257-5772
(For all other countries)