

PRODUCT SPECIFICATIONS

FEATURES	
▼ Media	
Film and Film masks (LAM)	✓
Flexo and letter press plates	✓
Printed copy (physical readings)	✓
▼ Dot Evaluation	
Halftone dots: 85 lpi - 175 lpi (35 - 70 lpcm)	✓
Numeric %-display	✓
Dynamic graphic display	✓
Screen angle / ruling calculation	✓
Positive / Negative reading	✓
Accuracy ± 1% over full range of readings	✓
Imaging time: < 1 second	✓
Geometric measurements	✓
▼ Value comparison	
Numeric and graphical comparison between film readings, plate readings and print readings	✓
▼ Interface	
High speed USB 2.0 link	✓
▼ Optical Range	
Field of view approx. 0.85 x 0.60 mm	✓
▼ Connectivity & Storage	
.jpg, .bmp or .p2p file formats	✓
Direct application interface (RIPs, spreadsheets, etc)	✓
▼ Light Source	
White light LED	✓

(Specification subject to change without notice)

TECHNICAL SPECIFICATIONS

FEATURES	
▼ Electronics	
Full 24 bit colour RGB camera with 640 x 480 pixel resolution.	✓
USB Control via PC	✓
Powered via USB – no batteries needed	✓
▼ Dimensions	
Plate-II-Print: 7 x 21 x 5 cm (W x D x H)	✓
Plate-II-Print softcase: 17 x 24 x 8 cm (W x D x H)	✓
▼ Weight	
Plate-II-Print: 470 g (1.0 lbs)	✓
Plate-II-Print with softcase: 780 g (1.7 lbs)	✓
▼ Environmental conditions	
Temperature: 16° - 32° C (60° - 90° F)	✓
Humidity: 40% - 60%, non-condensing	✓
▼ Minimum PC-requirements	
Pentium IV, 1 GHz, 512 MB RAM, 1024 x 768, 24-bit Display, USB 2.0, 1+ GB harddisk space	✓
▼ Operating Systems	
Windows XP/2000/Vista (1+GB RAM required)	✓
▼ Warranty	
12 months return to base. Software upgrades FOC for 12 months after purchase.	✓

(Specification subject to change without notice)

POVARESKIM
PROFISSIONAIS EM SISTEMAS GRÁFICOS

R. Carlos Petit, 221
04110-000 - São Paulo - SP
Telefax: (11) 5571.2683
email: povareskim@povareskim.com.br
www.povareskim.com.br

Your authorised Flexo Plate-II-Print dealer:

IHARA

Flexo Plate-II-Print

Perfect Quality Control
at all three stages of a flexo print production



IHARA
Color Control Made Simple

Ihara U.S., Inc.
25030 Avenue Tibbitts, Bldg. K
Valencia, California 91355 USA
Telephone: +1 (661) 257-5772
Fax: +1 (661) 257-5880
Website: www.ihara-us.com

With Flexo Plate-II-Print, dot measurement has never been so fast and easy. Save valuable production time by getting to the bottom of print problems with a click of a button. Visually see and measure dot sizes on film/masks, printing plates and printed copy. End the fingerpointing between prepress and platemaking and the printing department. Never has there been so much power packed into such a portable and easy-to-use solution for solving flexo printing problems.

WHY PLATE-II-PRINT?

The hand-held Plate-II-Print tool is an inexpensive QA-device for flexo printers, label printers and trade houses to check both *plate quality* and *print quality* quickly and efficiently.

Measurement of dot percentage and line count on masks and printed copy is completely automatic. For measuring dot percentages on plates, a simple three click mouse technique is required.

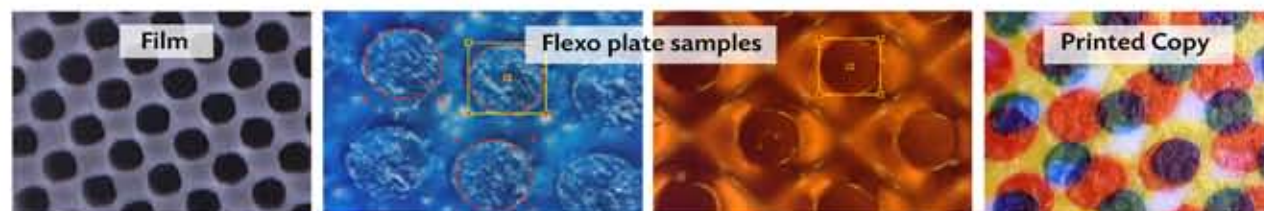
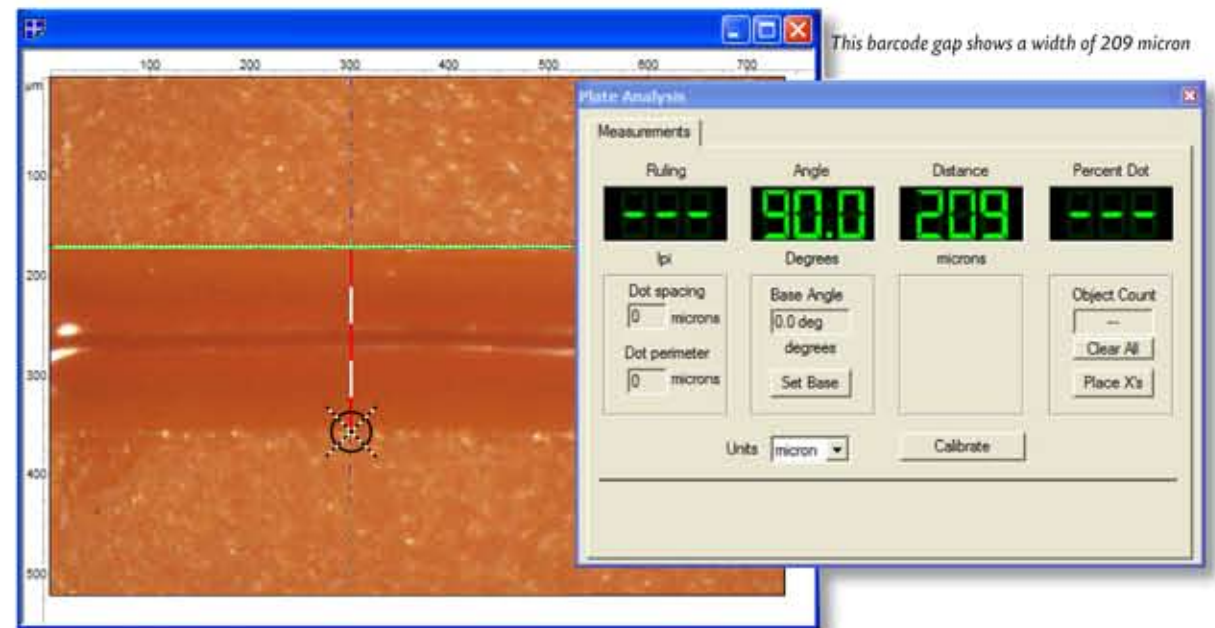
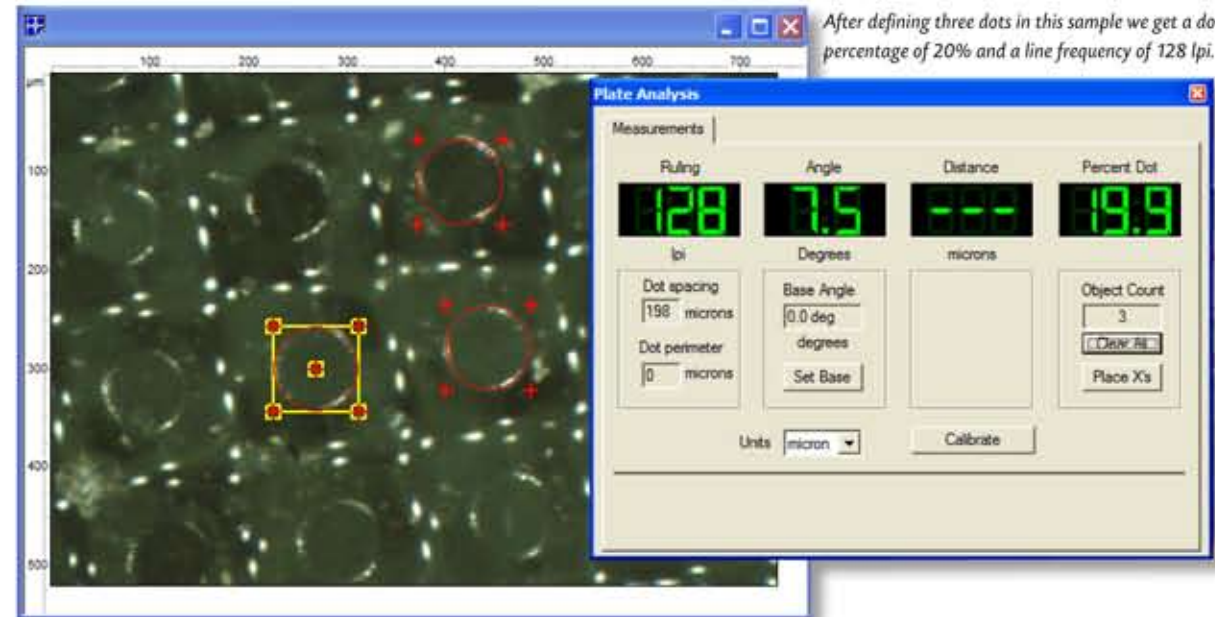
This very easy to use QA-tool has been designed to help identify plate issues that cause press downtime.

It's ability to view and check the final print is very useful for identifying printing issues and help to maintain the level of quality desired by professional printers.

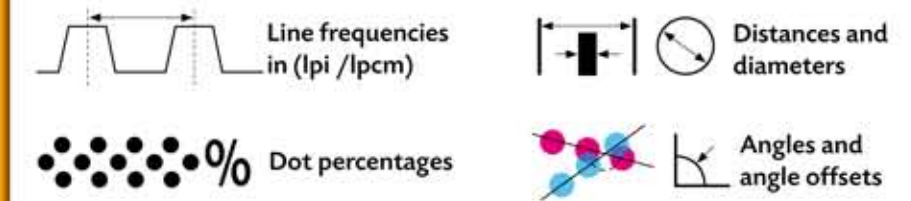
Plate-II-Print is a visual tool that allows you to see the dots you are measuring. Press time is too valuable to leave things to chance, so take control of what goes on press.

DOT PERCENTAGES, SCREEN COUNTS AND OTHER MEASUREMENTS

The measurements window provides the user with all the tools required to measure the dot percentage, line ruling, diameters, distances and angles. The dot percentage is calculated by defining the shape of three or more dots. This is done by clicking in the three reflections defining the dot shoulders (the reflections are caused by the angled 3-LED illumination system). Once a dot shape is defined it can be copied to two neighbour dots and we get a reading.



WHAT CAN BE MEASURED?



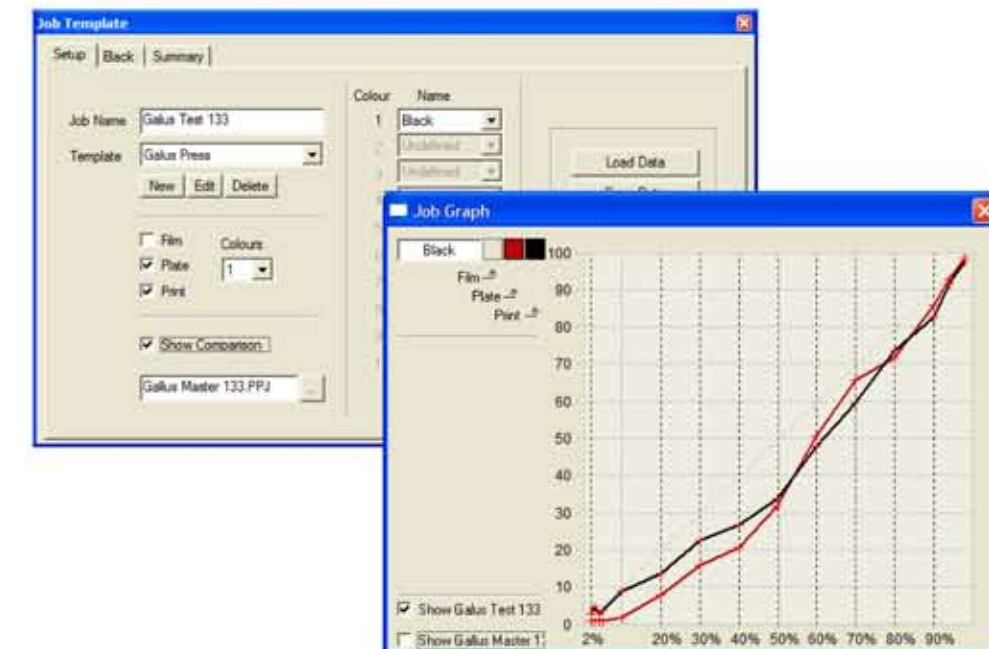
EASY TO OPERATE

Plate-II-Print is very simple to operate. Firstly place the target hole over the point to be measured. Then lower the top down onto the target area and press the button on the top of the Plate-II-Print camera to capture the image:



FINGERPRINT ALL THREE STAGES OF PRODUCTION

Plate-II-Print allows to compare all readings against each other. Simply enable the feature and the software moves reading after reading into a predefinable form. After all readings have been gathered the percentage values between film, plate and printed copy can be visually and graphically compared.



The example above shows a graphical comparison between Plate readings (red) and Printed Copy readings (black).

KEY BENEFITS OF FLEXO PLATE-II-PRINT

- ▶ Proven on over 40 flexo plate materials.
- ▶ Catch plate problems before they reach the press with oncoming plate inspection.
- ▶ Perfect tool for fingerprinting the press
- ▶ Generates a complete dot gain curve in minutes
- ▶ Compares dot sizes on masks, plate and printed copy – all on a single graph in minutes.
- ▶ Works on metal backed plate materials (letter press)
- ▶ Accuracy ± 1%.
- ▶ Halftone dot measurement: 85 - 175 lpi (35 - 70 lpcm).
- ▶ Imaging time typically 1 sec.
- ▶ Screen angle and ruling calculator.
- ▶ Hard copy and electronic reporting
- ▶ Direct RIP interface.
- ▶ Saves the image for archiving or e-mailing for further analysis.

see the dots

