



i1 COLOR MANAGEMENT SYSTEM
from zero to color in no time!

i1Display LT
i1Photo LT
i1Design LT

i1Photo
i1Photo SG
i1Proof
i1XT

i1iO



i1[®] color
management
system

x-rite
right on color

Why do you need color management?

Color management is essential for today's complex digital imaging technologies. There are so many variables: cameras, scanners, displays, printers, customer files, legacy documents, media and ink types – the list goes on and on. You need a flexible solution that anticipates challenges like these:

- Accurate on-screen and projected color
- Confidence in your digital camera files, scans and customer-provided colors
- Reliable match from monitor to printer
- Consistency and repeatability from print to print, and printer to printer
- PANTONE® and spot color measurement and output



i1 now solves your color issues faster than ever with the “Accelerated” i1Pro, letting you concentrate on what you do best – create! Here’s how it works: i1 tools are used to create and edit color profiles for all your color devices including scanners, monitors, digital cameras, digital projectors or printers. These profiles, which are very much like the individual fingerprints of each device, are then applied in your applications, driver or RIP to get your color correct. All of today’s professional imaging and design tools support color management profiles, so it’s easy to implement in your workflow!

Whether you’re a designer, photographer, prepress house or print provider, there is an i1 solution designed to meet your critical color concerns.

i1 System

From zero to color in no time.

i1 packages are the fastest, smartest, and easiest to use color management solutions – with the best, overall, complete out-of-box user experience on the market today! i1 solutions are designed for the unique needs of creative professionals who depend on color throughout their ecosystem. And it is the one system comprehensive enough to be the only color management solution you will ever need.

For monitor calibration, choose from two hardware options: the **i1Display2** color measurement device for monitors, or the accelerated **i1Pro** spectrophotometer, which measures not only monitors but a host of other devices. Each solution includes i1Match 3 software. Together, both hardware and software form the heart of the i1 Color Management System.

For profiling all your workflow devices, there's the Accelerated i1Pro Device with an IMPROVED ruler!

Calibrate all your monitors, scanners, printers, digital projectors and digital cameras – all with one device. You'll even be able to capture spot colors, ambient, and flash light. The i1Pro is sold in packages designed to fit your workflow, so purchase only the functionality you need now and add as your needs increase.

Automating your i1Pro is easy with the i1iO automated scanning table. Now, anyone owning an i1Pro measurement device can add automation at any time. i1iO will take full advantage of the enhanced speed of the i1Pro device – providing precise, automatic chart measurements in under three minutes!

i1Defined: The Latest in World-Class Training In-box Interactive Training and Remote Personal Color Trainer (PCT)

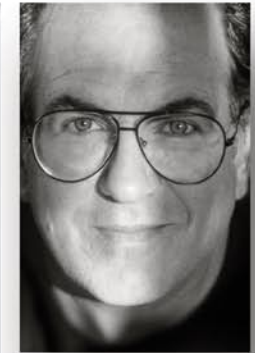
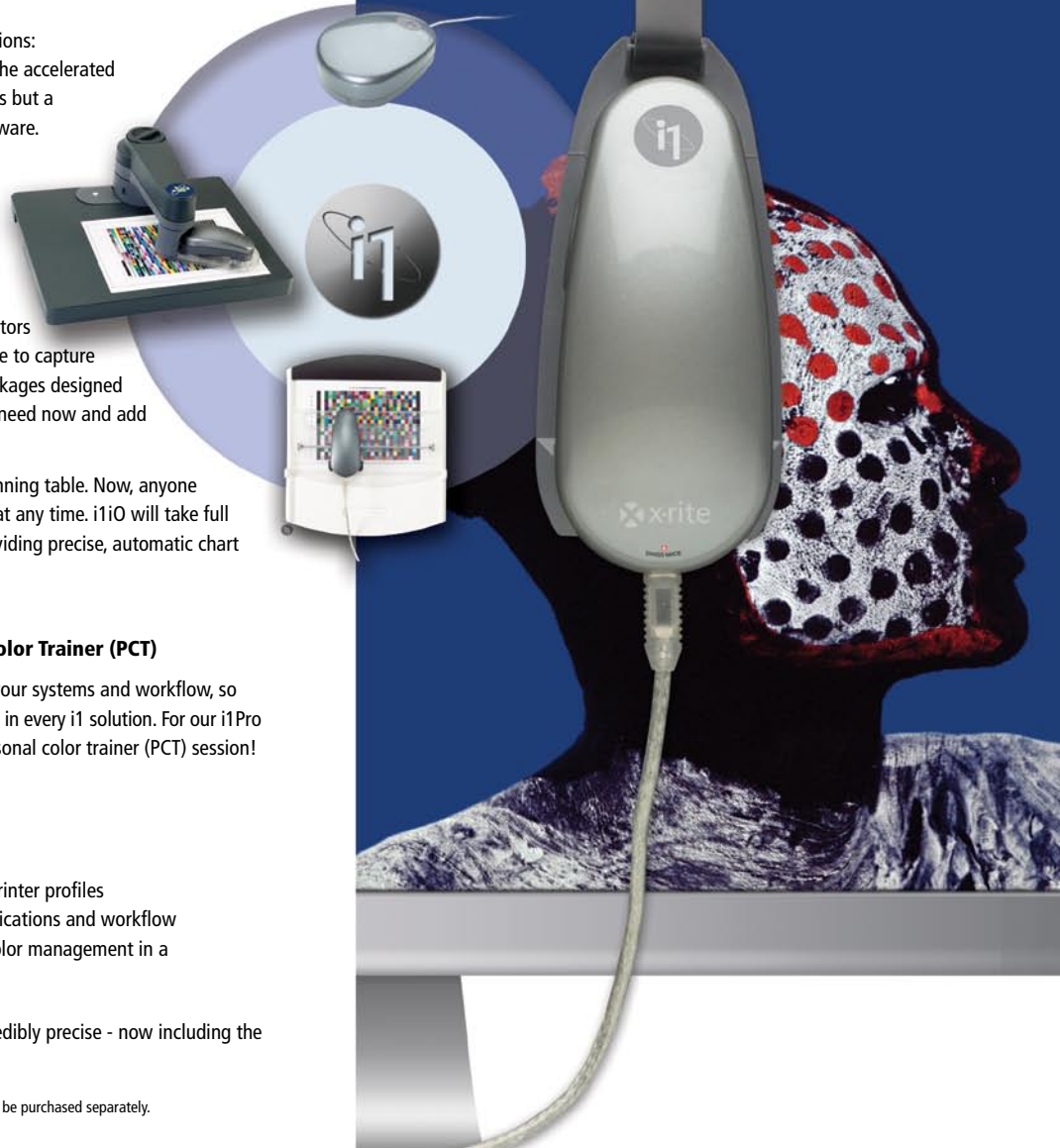
At X-Rite we know you need to maximize the efficiency of your systems and workflow, so we're now including a Flash-based in-box interactive training in every i1 solution. For our i1Pro customers*, you'll also receive a FREE one-hour remote personal color trainer (PCT) session! It's direct, efficient, and customized to your needs.

After attending your PCT session, you will:

- Learn the correct techniques for using i1 technology
- Understand how to create the best input, monitor and printer profiles
- Find out how to implement profiles in your desktop applications and workflow
- Avoid costly issues and problems when implementing color management in a sophisticated workflow

i1 solutions make color management easier, faster and incredibly precise - now including the industry's first in-box interactive training.

*i1Photo LT and i1Design LT do not include PCT sessions, however sessions can be purchased separately.



Eric Meola, Photographer

Until I started using all the X-Rite i1 modules, I was shooting in the dark, not knowing exactly how the colors on my monitor would translate in the "real world". Now I know that what I see on my monitor, or in my prints, is exactly what someone else is going to see. Now that I use X-Rite's i1 solutions, and I've seen the results, I wouldn't dream of not using them. The i1 solutions are as essential as a computer – once you've tried them, you're booked on precise, repeatable results.

www.ericmeola.com
Cover photo by Eric Meola

Choosing the right i1 solution

i1Display solutions are where reliable and affordable color begins. These powerful, compact monitor profiling solutions offer an excellent entry point for anyone who depends on accurate on-screen color. Both the i1Display LT and i1Display 2 profile your LCD, CRT or laptop display so that you'll finally see colors as they actually are. The Display LT solution offers the easy mode, while the Display 2 solution extends to more advanced capabilities including workgroup match and RGB controls. Now includes X-Rite's new interactive in-box training. Ideal for photographers, creative directors, publishers, and designers.

i1Design LT is the entry level color management solution of choice for freelance designers, small creative firms, and small print shops. With it you can quickly and easily create color profiles for displays, RGB printers, and CMYK printers. With i1Share software you can also easily measure and share spot and PANTONE® colors. If you're looking to get a better color comp from your desktop printer, then **i1Design LT** can get you started. For color critical work, such as in high-end proofing or photo imaging, simply upgrade your printer module to take advantage of the full test chart capabilities in both RGB and CMYK output. Now includes X-Rite's new interactive in-box training.

i1Photo LT is the affordable, entry level color management solution for social, portrait, and prosumer photographers. Profile displays and RGB printers in small test chart mode. Now includes X-Rite's new interactive in-box training.

i1Photo is ideal for the RGB workflow of photographic professionals. Profile your entire digital color workflow from input to output - digital cameras, scanners, displays, printers and projectors. You can even fine-tune your RGB printer profile using i1Editor. Includes a Mini ColorChecker. Learn how to maximize these great features with X-Rite's new interactive in-box training and a personalized one-hour remote session with an X-Rite Personal Color Trainer (PCT) - now included.

i1Photo SG includes all the same great features as i1Photo, plus the Digital ColorChecker SG.

i1Proof offers a sophisticated solution for CMYK print shops and design firms requiring robust color needs. Ensure accurate, consistent color from scan to monitor to proof and final print. The CMYK output profiling makes this the best package for anyone using a Postscript RIP. Other features include the ability to profile projectors, edit profiles, measure and share spot and PANTONE® colors, and measure lighting conditions. Learn how to maximize these great features with X-Rite's new interactive in-box training and a personalized one-hour remote session with an X-Rite Personal Color Trainer (PCT) - now included.

i1XT bundle is for those who want it all. All i1Pro capabilities, options, and accessories are included in this package. i1XT is perfect for companies looking for a single-source solution that ties together all of their color controls. Includes profiling of scanners, digital cameras, displays, RGB and CMYK printers, projectors, as well as profile editing and measurement of light, spot, and PANTONE® colors. i1XT includes X-Rite's new interactive in-box training and a personalized one-hour session with an X-Rite Personal Color Trainer (PCT) plus i1 Platinum Protection, an extended 3 year warranty and service package, including Express Replacement for your i1Pro device.

If you're new to digital color:

i1Display LT i1Display 2



If you're a graphic designer or creative in need of better comps:

i1Design LT



If you're a photographer or photo finisher:

i1Photo LT i1Photo i1Photo SG



If you're an agency or design boutique requiring precise presentations, a small prepress house, in-house repro department, quick print shop, print-for-pay or large format printer:

i1Proof



If you want the ultimate i1 package:

i1XT



We've put together five i1 packages for you to choose from that are based on differing market requirements. Regardless of where you start, i1 offers a clear upgrade path.

One Device does it all

i1Pro Spectrophotometer

i1 sets a new stage for speed and ease-of-use, putting leading edge technology in your hands.

The defacto industry standard i1 solutions provide super-fast measurements, greater patch recognition, and of course, no waiting! The accelerated i1 spectrophotometer is not only optimized to read twice as fast, but is also outfitted with new Teflon® pads, creating a smoother gliding action. Together with i1Match software, users click, swipe, and read color targets almost instantaneously. Reading patches is fluid and effortless – with no pauses or hesitation at the end of rows.

With the i1Pro you can measure and control every color device in your workflow. Connected with just a USB power cord, i1Pro can profile monitors, scanners, printers, digital cameras, and projectors. Plus, you can capture color from a physical swatch or measure and capture your flash and ambient lighting conditions – it's all easy with your i1!

i1iO Automated Scanning Table

If you plan to measure a lot of charts, i1iO is a must have. iO is an automated chart-reading table that makes measuring color swatches hands-free and accurate. When you dock your i1Pro device into the iO, your i1 is transformed into a tireless color measurement assistant. And of course it will take full advantage of the increased speed of the accelerated i1Pro for the fastest chart measurements. And you'll still be able to use your i1 to profile all your other devices – simply undock and you're ready to go.

Measure any substrate up to 10 mm, including:

- photo paper
- fine art rag
- poly bag
- textile
- corrugated stock
- ceramic

Software made easy

i1Match 3

i1Match software is the brains behind the i1 system. It offers the easiest-to-use interface, with simple on-screen help guides to help the user breeze through the process.

Every i1 package includes the same version of i1Match, but each has specific profiling modules enabled. That means no matter which version of i1 you buy, you can always upgrade i1Match with a purchased access code to meet your growing needs.

i1Match modules include:

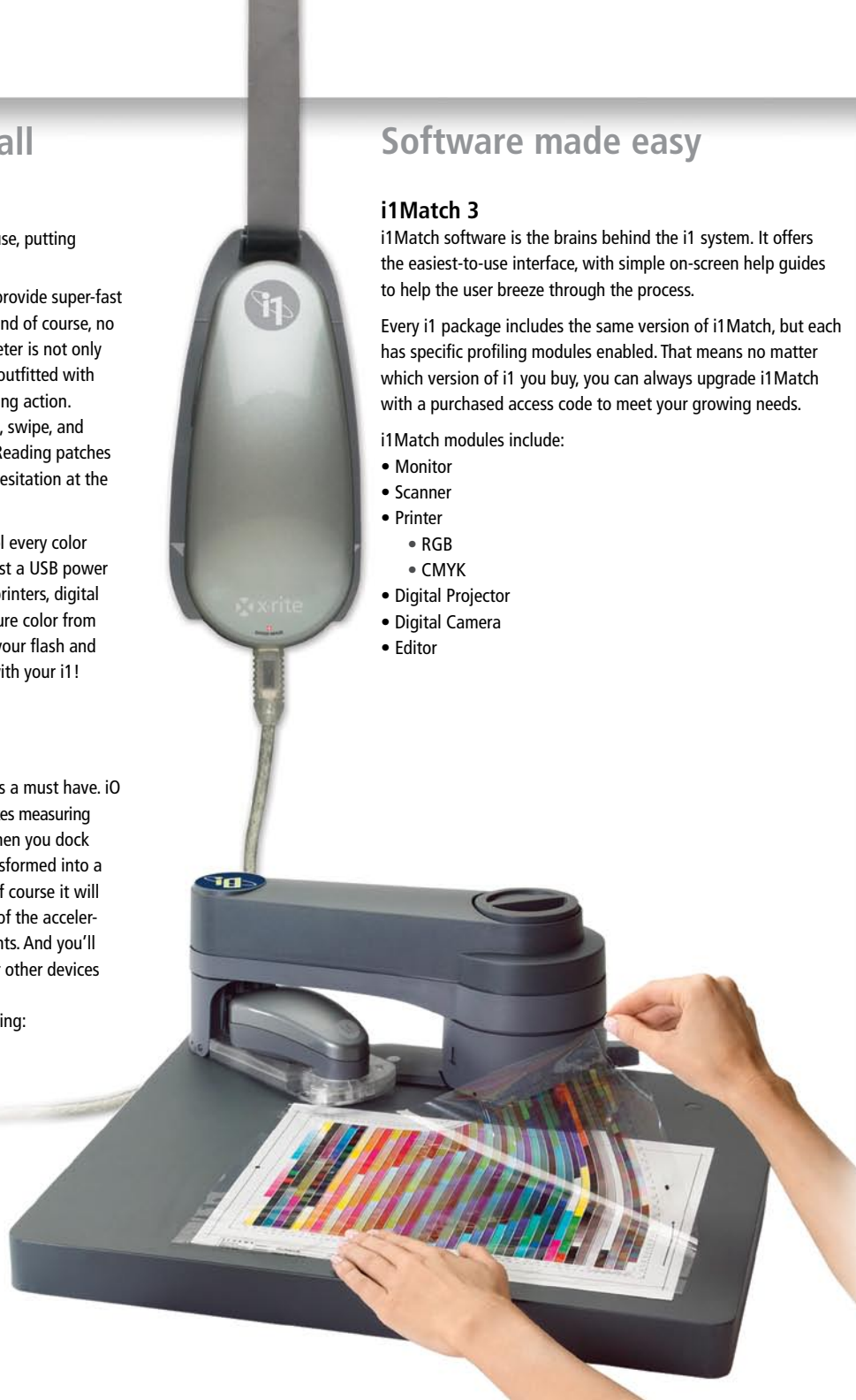
- Monitor
 - RGB
 - CMYK
- Scanner
- Printer
- Digital Projector
- Digital Camera
- Editor



i1 Ruler and Carry Case

Every i1Pro solution ships with a ruler system. The enhanced i1 ruler enables ease-of-use with just one hand, making chart measurements extremely fast and easy. Use the ruler as a stand-alone or with the included white-surfaced, sturdy, foldable back-up board. Now rapid, error-free measurements are a certainty with the i1 ruler, especially when accompanied by the accelerated i1Pro device constructed with a Teflon base for smooth gliding!

As an added feature to your color management system, your i1Pro will arrive in a new water-resistant, non-abrasive canvas carrying case with shock-absorbing foam padding, making travel with your i1 system a snap. Go from Zero to Color in no time — both you and your i1!





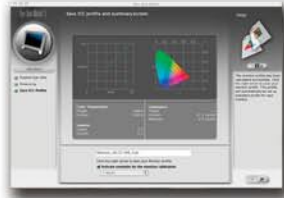
Greg Gorman, Photographer

Working with the i1 system, I am assured a complete color managed workflow from start to finish. From accurate monitor calibration to superb printer profiles, the i1 delivers the confidence I need in my digital photographic workflow.

And now, being able to calibrate my digital projector with the i1Beamer, I no longer have to worry about my on-screen imagery for my digital presentations.

The i1 is a total solution for all of my color management needs!

www.greggormanphotography.com



Software Modules

i1Match is comprised of six software modules. All i1 solutions contain one or more modules, and any module can easily be added at any time if it is not included in your original solution of choice.

Monitor Module

- Profile CRT, LCD and Laptop Displays in Easy or Advanced mode
- Create profiles for any ambient light condition for optimal viewing for color critical work
- Utilize reference profiles to match all monitors in your workgroup
- Unlimited gamma white point and luminance settings including
 - native gamma
 - measure luminance as target
- Validate and trend monitor performance
- Chromatic adaptation formula for a closer visual match of different monitors (or of different settings on one monitor) with different white points
- Gray balance optimization for more neutral and better defined grays
- Profile summary report ideal for post profile analysis
- Profile reminder to ensure true and reliable color over time
- Push Button Calibration (PBC) for one-step profiling for industry leading monitors

Scanner Module

- Supports both reflective and transmissive targets (reflectance target included)

Printer Module

- "Colorful" Gamut Mapping – based on ProfileMaker5 provides unmatched quality for smoothness and shadow detail
- Semi-automated scanning method for test charts – measure 300 patches in less than a minute with i1Pro
- Supports all types of RGB and CMYK devices (when function is activated as indicated by package)
- Automatic detection of RGB or CMYK printer
- Print test charts directly from software application – no need to launch separate program
- Visual display of measured data provides instant feedback during measurement process
- Automated scanning method with i1iO
- Enables RGB Easy and CMYK Easy (small test chart) profiling in every package

Digital Projector Module

- Build an accurate on-screen profile in just a few minutes
- Designed for the creative, non-technical user
- Optional Beamer Holder provides more convenience

Digital Camera Module

- Create digital camera profiles for different photographic tasks
- Easily create ICC camera profiles in Easy or Advanced Modes, with the ability to modify for contrast, exposure, color saturation and adjustments of shadows and highlights.

Profile Editor Module

- Edit profiles with the simple editing functions for the most popular editing needs



Services and Training



i1Platinum Protection

Your i1 deserves care and attention. For extended coverage and complete service, upgrade your standard X-Rite warranty to a three-year extended warranty. Plus you'll get Express Replacement which guarantees next-day replacement of your i1 hardware.

You also receive:

- Accidental damage protection
- Free annual accuracy verification
- 10% off all X-Rite Color Services classroom or on-site training programs



i1Defined

X-Rite now offers the industry's first in-box interactive Training with all i1 solutions. i1Pro solutions* include a FREE one hour remote Personal Color Trainer (PCT) session. PCT sessions are also available separately. For more information on these training solutions, visit xrite.com/aboutdefined.

Or check out our website for classroom training or a seminar near you at xrite.com/training

* i1Photo LT and i1Design LT do not include PCT sessions, however PCT sessions can be purchased separately.

i1 Components

Every i1 solution includes a selection of hardware, software and accessories.



Hardware

i1Display 2 – a colorimeter designed for profiling of CRT, LCD and laptop display, plus measures and captures ambient light



Accelerated i1Pro

Spectrophotometer – optimized to read twice as fast, 10 nm optical resolution instrument used to measure and profile any device, plus measure spot colors and flash/ambient light



Software

i1Match – Profile creation software:
Monitors • Scanners • Printers • Digital Projectors • Digital Cameras



i1Editor – Basic profile editing software

i1Share – Build and communicate custom color palettes and capture spot color and light (ambient and flash)

Services and Training

i1 Platinum Protection – extended warranty bundle for 3 years coverage and express replacement service if ever needed

i1Defined – Interactive in-box training and Personal Color Trainer (PCT)



Accessories

Chart measurement ruler – Easy-to-use manual strip reader included with all i1Pro solutions



Carrying case – soft sided case protects your investment and easily transports your i1Pro system anywhere you go



Beamer Accessory Kit – i1Beamer holder for projector profiling



i1iO Automated Scanning Table – for automated hands-free chart measurement. Handles any substrates up to 10 mm – photo, fine art rag, textile, poly bag, corrugated and ceramic. iO will take full advantage of the enhanced speed of the new i1Pro device for the fastest measurements!



i1Pro Accessories –

- Spot measurement holder
- Monitor holder
- Ambient light measurement head



Digital ColorChecker SG and Mini ColorChecker color reference charts

Related Products

When you need even more robust color management capabilities such as custom measuring and comparing, press profiling, custom target creation or other special needs, then consider upgrading to X-Rite ProfileMaker software solutions that offer different levels of flexibility.

PM5 Photostudio

for the studio photographer

PM5 Publish

for publishing

PM5 Publish Plus

for multi-color publishing

PM5 Packaging

for flexo, gravure, offset and inkjet n-color printing



ColorChecker® Charts

Professional photographers rely on ColorChecker brand test targets to ensure accurate color reproduction.

ColorChecker Standard – original 24 patch

Custom White Balance – for accurate white reproduction

3-Step Gray Scale – for balancing images

Digital ColorChecker SG – optimized for digital camera profiling (required to create profiles with i1Match and ProfileMaker Digital Camera modules)

Go Anywhere Targets – easy to use pocket size format of the standard size



Please refer to chart in back of brochure to determine which components are included or optional in your solution of choice.



With Color Management



Without Color Management

More time to design

The creative process has been streamlined for designers working in a digital environment, but has also presented challenges in trying to maintain accurate, precise color. Without the proper tools and know-how, designers have historically passed the color responsibility upstream and depended upon the print provider to control their color. But not any more – you can take complete control!

i1 color management systems enable designers to do what they do best: design – by making it easy to control and manage color throughout the entire workflow. Beginning with the most critical device – an accurately profiled monitor, the creative process takes on true-to-life colors. From there i1 can control scanned artwork, images captured with a digital camera, desktop printers, high-end proofers and commercial presses to translate color from one device to the next, to the next, with ease.

And the good news? All the applications used by designers on a daily basis understand the importance of accurate color and fully support color management! Build your profiles with i1 and use them in QuarkX-Press®, Photoshop®, Illustrator®, InDesign®, Acrobat® and other popular software applications. This means that you no longer have to present your comps with excuses for color shifts from your desktop printer, it means that the digital image you imported from your photographer into your layouts can reproduce with authenticity, and it also means that you no longer have to pay for costly tweaks on press. You can now virtually softproof your work on your monitor and know exactly what you'll get on press! i1 is the ultimate "what-you-see-is-what-you-get" tool.

"Small Test Chart" technology

For those just starting out in color management, i1 Match features a special "small test chart" capability. With this new technology you can quickly and easily create a perceptual color profile by reading just a few rows of color swatches from a given output device. Within the i1Match application, you simply print the small test chart named RGB Easy or CMYK Easy and then scan it in using your i1. i1Match does the rest!

This "small test chart" technology uses a revolutionary, patent-pending approach which combines an internal pre-linearization and creation of a virtual large test chart. We then apply the most sophisticated profiling techniques to fine tune the gray axis. The resulting profile is based solely on perceptual rendering – the ideal solution for entry level color management and for producing better color comps.



Share Colors with others

Every i1 package includes i1Share – a complete color workshop on your desktop. It's the perfect creative tool for measuring single colors, mixing them, comparing them and converting them to any color scenario you can imagine.

With i1Share you can easily:

- Create, evaluate and convert colors
- Click and measure any color (from a print, fabric, paint, anything)
- Mix and build color blends and tints
- Check to make sure that color will reproduce accurately
- Find the closest PANTONE® color
- Access the complete digital Pantone® library
- Create custom color palettes
- Share the color with other users – coworkers, project team and clients
- Export the color as a palette to use in other applications

i1Share also enables you to measure both flash and ambient light, build a lighting library and simulate color viewing under the different lighting conditions. You can even check the quality of the light in your light booth and working environment. It's perfect for creatives, because, not only is the entire PANTONE® library of colors included, but you can build your own custom color palettes from measured color swatches. You can create shades and blends of both the measured and existing library colors. You can even export standard color palettes for the major desktop publishing applications.

With its enhanced CxF capabilities, i1 Share connects software and hardware, enabling you to transfer your colors throughout the complete workflow from Creative to Prepress to Pressroom.

Whether you own an i1 or not, you and your clients can take advantage of many cool features of this FREE software – downloadable at i1color.com.



Howard Simkins, Professor, Coordinator of Computer Technology, Sheridan Institute of Technology, School of Animation Arts and Design

It is very hard to be successful in today's creative arts industry without knowing and using colour management. It is an essential element in the education of creative professionals, and using X-Rite's suite of products is an easy first step to implementing a successful colour managed workflow.

www1.sheridaninstitute.ca

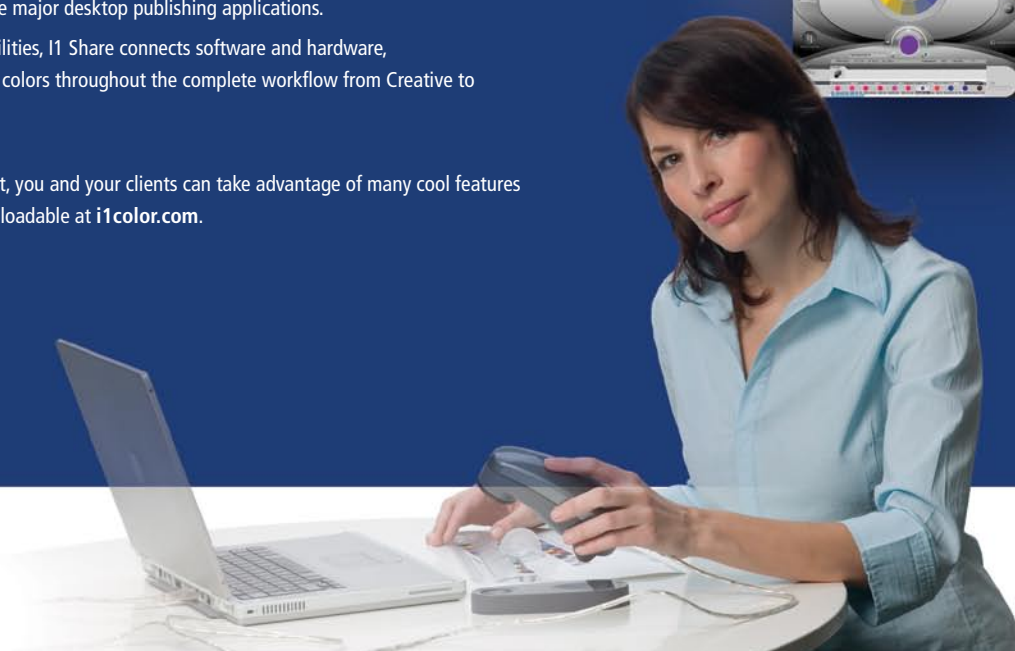


Vincent Versace, Photographer

Color is the backbone of my art. If my color is not right, then what I saw is not being conveyed. The beauty of the i1 system is that, across the board, I can get accurate color on my monitors, scanners, printers and digital projectors.

The elegant interface is so easy to use and is the same for i1Display 2, which I carry with me everywhere I go!

www.versacephotography.com



i1 Packages

i1Display 2



is a great way to get started in color management.

It is the revolutionary display color management system giving you professional level color management on any type of monitor – CRT, LCD and even laptops – in an easy to use and affordable package.

i1Display LT provides ability to profile CRT, LCD and laptops all in Easy Mode. Fully upgradable to i1Display 2 functionality.

- Display-optimized colorimeter for fast, accurate LCD and CRT profiling. Special laptop mode ensures more neutral laptop LCD profiles.
- Easy-to-use, step-by-step software interface
- Utilize reference profiles to match multiple monitors in your workgroup
- Unlimited gamma whitepoint and luminance settings including native gamma and measure luminance as a target
- Validate and trend monitor performance
- Adapt profiles for any ambient light conditions
- Optimized adjustment of hardware controls like brightness and color temperature
- Push button calibration for 1-step profiling of industry leading monitors
- Use at multiple workstations – no additional licensing fee
- Highest repeatability for consistent calibration and profiling results
- Highest sensitivity in dark areas for better control in shadow detail and more neutral gray scale

i1Design LT



is an affordable, entry level color management system for creative professionals.

With your i1Pro you can obtain accurate color on all your displays and easily build profiles for your printers. And you'll be able to take full advantage of i1Share software to measure, mix and share spot colors! You won't need to make excuses for color again.

i1Design LT incorporates new "small test chart" technology which makes profiling both RGB and CMYK printers a snap. The small test charts are quick, simple and easy to use – by reading just a few rows of patches, you won't believe how good your color can look on your desktop printer. For more critical color needs like proofing or high end photo color, upgrade to an advanced RGB or CMYK printer profiling module.

- Profile monitors and printers in small test chart mode
- Measure, mix and share spot colors and custom color palettes with the powerful i1Share software
- Ambient light measurement for verifying viewing conditions
- Easy-to-use, step-by-step software interface
- Create monitor profiles for any ambient light condition
- Laptop mode for better, more neutral laptop LCD profiles
- Utilize reference profiles to match multiple monitors in your workgroup
- Easily upgrade functionality as your needs grow through software codes
- Upgradable to full automation with i1iO scanning table (Requires full RGB or CMYK module)

i1Photo



is the most complete, full-scale color management system for photo professionals.

With your i1Pro you can measure and control color on displays, digital cameras, scanners, digital projectors and printers of all types. You can capture both flash and ambient light and easily measure spot colors. With i1Photo you'll be in total control of your color throughout your digital photographic workflow!

i1Photo features professional level color profiling based on ProfileMaker algorithms for your RGB inkjet, dye-sub or photo imaging printers. Includes a bonus Mini ColorChecker!

i1Photo LT includes same functionality as i1Design LT, minus CMYK small test chart.

i1Photo SG is a bundle solution that includes all the same features as i1Photo, plus the Digital Color Checker SG.

- Profile monitors, scanners, printers, digital projectors and digital cameras
- Easy-to-use, step-by-step software interface
- "Colorful" gamut mapping with unmatched quality for smoothness and shadow detail – Full RGB and CMYK Easy (small test chart)
- Create monitor profiles for any ambient light condition
- Laptop mode for better, more neutral laptop LCD profiles
- Utilize reference profiles to match multiple monitors in your workgroup
- Ambient light measurement for verifying viewing conditions
- Adjust contrast, exposure, color saturation, shadows and highlights with Digital Camera module
- Profile editing with i1Editor
- Measure, mix and share spot colors with i1Share
- Upgradable to full automation with i1iO scanning table

i1Proof



is the ideal color management system for small prepress and print professionals.

With your i1Pro you can measure and control color on displays, scanners, digital projectors and printers of all types. It's not just for proofing! You can profile all of your RIP, printer, ink and media combinations for the best color every time. Easily measure spot colors and capture both flash and ambient light. i1Proof features CMYK profiling for professional level color from your CMYK RIPs and printers. You can also create perceptual color profiles for RGB printers using the "easy" test chart, as well as the ability to edit your profiles with i1Match Profile Editor.

- Profile monitors, scanners, printers and digital projectors
- Easy-to-use, step-by-step software interface
- "Colorful" gamut mapping with unmatched quality for smoothness and shadow detail – Full CMYK and RGB Easy (small test chart)
- Create monitor profiles for any ambient light condition
- Laptop mode for better, more neutral laptop LCD profiles
- Utilize reference profiles to match multiple monitors in your workgroup
- Ambient light measurement for verifying viewing conditions
- Profile editing with i1Editor
- Measure, mix and share spot colors with i1Share
- Upgradeable to full automation with i1iO scanning table

i1XT



is the ideal bundle that does it all.

With i1XT you can handle just about any color management issue or problem that comes your way. You can measure and control color on digital cameras, scanners, displays and printers of all types – even projectors with the complete i1Beamer kit included. i1XT includes all test charts for your various printers, so no matter what, you've got the solution to match. You'll appreciate the comfort of having the extended warranty of three years, express replacement service if your unit needs repair, and a full one day training at one of our facilities. If you want the flexibility to handle any color situation, any time, then i1XT is for you. Maximize the value of your i1 investment.

- Profile monitors, scanners, printers, projectors and digital cameras
- Easy-to-use, step-by-step software interface
- "Colorful" gamut mapping with unmatched quality for smoothness and shadow detail – Full CMYK and full RGB
- Create monitor profiles for any ambient light condition
- Laptop mode for better, more neutral laptop LCD profiles
- Utilize reference profiles to match multiple monitors in your workgroup
- Ambient light measurement for verifying viewing conditions
- Adjust contrast, exposure, color saturation, shadows and highlights with Digital Camera module
- Profile editing with i1Editor
- Measure, mix and share colors with i1Share
- i1 Platinum Protection extended warranty for three year period
- One-day classroom training at designated facility
- Upgradable to full automation with i1iO scanning table

MEASUREMENT DEVICES
Accelerated i1Pro
i1Display 2

FUNCTIONALITY
Spot Mode Color Measurement
Scan Mode Color Measurement
Light Measurement
Monitor Profiling
Scanner Profiling
RGB Easy (small test chart)
RGB output profiling
CMYK Easy (small test chart)
CMYK output profiling
Digital Camera Profiling
Digital Projector Profiling
i1Editor for basic profile editing
i1Share
to create, evaluate and communicate colors (including Color Picker functionality)
Platinum Protection - warranty and service
Interactive In-Box Training
Personal Color Training
Upgrade Voucher

ACCESSORIES
Mini ColorChecker Chart
ColorChecker Chart for digital camera module
Beamer Accessory Kit
Easy to use ruler - for chart measurement in scan mode
i10 Automated Scan Table for automated chart measurement
Scan target, monitor holders and spot color guide
Carrying Case

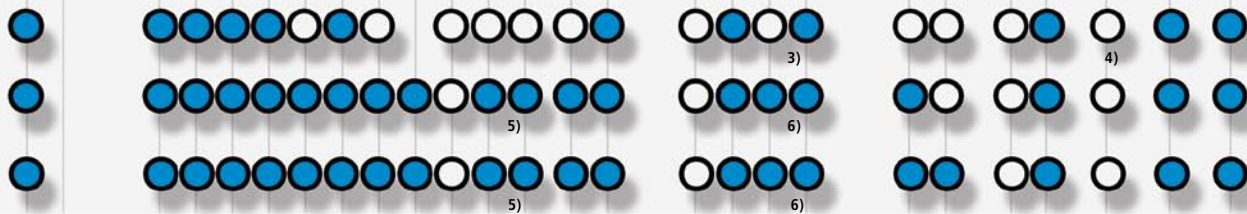


i1Display LT

i1Display 2



i1Design LT



i1Photo LT

i1Photo

i1Photo SG



i1Proof



i1XT



Add automation at any time!



**FAST
AUTOMATED
VERSATILE
AFFORDABLE**

Increase your productivity with precise, automatic chart measurements in under 3 minutes! Once you have an i1Pro device, you can add automation at any time. The i10 measures up to 400 patches per minute, saving you both time and money. Measuring a variety of substrates up to 10 mm, the i10 not only measures test charts on all your photo papers, but it will even provide profiles for poly bag, fine art rag, ceramic, corrugated stock and varying textiles!



- 1) monitor only device, therefore no reflectance color measurement functionality together with i1Share
- 2) upgrade voucher to i1Pro Solutions
- 3) upgrade to i1Match modules
- 4) upgrade to full test chart mode prior to adding i10
- 5) software only
- 6) upgrade to ProfileMaker 5 solutions

Technical specifications for i1®

i1Pro device

Spectral measurement device, supported measurement modes:	Reflectance single measurement Reflectance scanning measurement with automatic patch detection Emission: radiance measurement (monitor measurement) Emission: irradiance measurement (light measurement)
Spectral analyzer:	Holographic diffraction grating with 128 pixel diode array
Optical resolution:	10nm
Physical sampling interval:	3.5nm
Spectral data:	Range: 380 ... 730 nm in 10 nm steps
Measurement aperture:	4.5mm diameter
Interface:	USB 1.1
Physical dimensions:	Length 151 mm, width 66 mm, height 67 mm (6 x 2.6 x 2.6 inches)
Weight:	185 g (6.5 oz)
Accessories included:	Calibration plate, USB cable, monitor holder, positioning target, scanning ruler, and light measurement head
Measurement geometry:	45°/0° ring illumination optics, DIN 5033
Light source:	Gas filled tungsten (Type A)
Physical filters:	No or UV cut (Filters not exchangeable)
Inter-instrument agreement:	Average DE*94 0.4, max. DE*94 1.0 (Deviation from X-Rite manufacturing standard at 23°C for single measurement mode on 12 BCRA tiles (D50,2°)
Short-term repeatability:	DE*94 <= 0.1 (D50,2°), with respect to the mean CIELab value of 10 measurements every 3 seconds on white
Data format:	Spectral radiance (mW/nm/m2 /sr); Luminance Y (cd/m2)
Measurement range:	0.2 ... 300 cd/m2
Short-term repeatability:	x,y: +/- 0.002 typical (CRT 5000°K, 80 cd/m2)
Type:	Cosine-corrected diffuse light measurement head
Diameter:	6.0 mm
Data format:	Spectral irradiance (mw/nm/m2), Illuminance Y (lux)
Power supply:	Device powered by USB. No additional charger or battery required. USB 1.1 high power device.
i1 Ruler:	33.5 cm x 17 cm
i1 Ruler Board:	35.5 cm X 26.5 cm folded 35.5 cm X 40 cm unfolded

i1Display 2 device

Device Type:	Three channel colorimetric sensor
Interface:	USB data and power supply
Data format:	Luminance (cd/m2), chromaticity coord. x, y (CIE 1931)
Refresh rate:	Monitor frequencies: 40 Hz to 150 Hz
Physical dimensions:	Length 84 mm, width 64 mm, height 35 mm
Weight:	Measurement device 131 g, counter weight 33 g
Measurement range:	Luminance: Black point: 0.02 cd/m2 White point: 3,000 cd/m2 Illuminance: Suitable for use in Graphic Display Proofing per ISO/CD 12646 Standard
Accuracy:	With respect to i1Pro on reference monitor (white 6500K), chromaticity coord. x,y +/-0.004 Luminance 0.3% at Y=75 cd/m2 (white 6500K) Chromaticity coord. x,y <+/-0.001 at Y=75 cd/m2 (white 6500K)
Short-term repeatability:	Power Required Powered by USB, no additional charger required USB low power class device
Power conditions:	

i1iO

Paper/Chart/Positioning	
Positioning Area:	32 x 23 cm, 12.6" x 9" (Width x Height)
Media Thickness:	Max. 10 mm, 0.39"
Patch Size: Min:	6 mm x 7 mm (Width x Height)
Chart Measurement	
Measurement Speed:	> 400 patches / Minute, IT8.7/3 chart (924 patches) <= 2.2 minutes
Calibration:	Automatic on internal calibration reference
General	
Interface:	USB 1.1
Power Supply:	Auto rating 100 to 240 VAC, 50 / 60 Hz
Physical Dimensions:	510 x 460 x 170 mm, 20 x 18.1 x 6.7 (Width x Depth x Height)
Weight:	4.5 kg, 9.9 lb (without i1 Pro device)
Measurement background:	White

System Requirements

- Macintosh®
- Power Mac G3 or higher, 300 MHz
 - Mac OS X 10.3 or later
 - 128 MB of available RAM
 - 100 MB of available hard disk space
 - Monitor resolution of 1024 x 768 pixels or higher
 - USB Support
- Windows®
- PC with 300MHz
 - Windows 2000, XP
 - 128 MB of available RAM
 - 100 MB of available hard disk space
 - Monitor resolution of 1024 x 768 pixels or higher
 - USB Support



Seth Resnick, Photographer

As professional photographers transition from film to digital, color management shifts from being an option to a necessity.

Responsibility for accurate color has shifted from the client to the photographer. Without color management you simply have nothing. X-Rite provides the tools so that a photographer today can maintain consistent and accurate color with an easy-to-use interface.

I incorporate X-Rite solutions into all aspects of my workflow: profiling monitors, creating paper profiles and for calibrating my LCD projectors. Quite simply, my entire workflow begins with X-Rite's i1.

www.sethresnick.com

X-RITE WORLD HEADQUARTERS

Grand Rapids, Michigan USA • (800) 248-9748 • +1 616 803 2100 • xrite.com
© 2007, X-Rite, Incorporated. All rights reserved.

Part No. 420139 (09/07)



i1color.com